



**Double
Cattle Co.**

13th Annual
Bull Sale

March 26, 2022



Saturday, March 26, 2022 2:00PM
NORTHERN LIVESTOCK SALES, PRINCE ALBERT, SASKATCHEWAN



Welcome to our 13th Annual Bull Sale. COVID and Mother Nature's mood swings made 2021 another challenging year but we made it and look to 2022 with hope and optimism.

A huge highlight for us this summer was being a part of the 2021 SASK ANGUS TOUR. It was a day for us not only to showcase our cattle but to visit with old friends as well as make some new ones. Thank you to all everyone that supported the tour as well as those who helped organize this event.

This is our strongest set of sale bulls yet and as you page through the catalogue you will see the consistency of the bulls from the first to last. These are bulls that will go out any work for you.

Thank you to our customers from our past sales, we appreciate your support and are proud to have our genetics in your pastures.

If this is the first time, considering a DOUBLE 'F' bull, we work hard to raise these bulls so they will be an asset to your program so buy with confidence.

This is another excellent set of BLACK and RED ANGUS bulls on offer again this year. We continue to place a great deal of emphasis on muscle, shape and soundness with calving ease and performance in mind. The focus on the maternal side is just as important with milking ability, udder quality and longevity. Overall In our herd, soundness of feet and legs is key in raising the 'right kind' of animal from the ground up.

New this year, we are introducing a tremendous set of SIMM ANGUS X bulls. These bulls will knock your socks off and are definitely worth a look!!!

You are invited to make arrangements before the sale to view bulls anytime on the farm. We will also have videos posted on our website at www.doublefcattle.com, facebook and dlms prior to sale day.

If you have any questions about the sale offering please contact us. We would be happy to assist in any way we can.

THANK YOU!

Kelly, Angie, Garret and Jacob

THE AUCTION WILL BE LIVE AS WELL AS ON DLMS



KELLY, ANGIE, GARRET & JACOB FEIGE
Box 50, Parkside, Saskatchewan S0J 2A0
Phone: 306-747-2376 Cell: 306-747-7498
kfeige@sasktel.net
www.doublefcattle.com

Celebrating over
75 YEARS
in the purebred industry
1943-2022



OBI Livestock Ltd.

Mark Holowaychuk (403)896-4990

Roger Peters (403)828-9815

Kylie Simpson (780)385-8446

Jesse Emery (780)284-3490

Email:

o.b.i@shaw.ca

Website:

www.cattlemanagement.ca

WELCOME FROM OBI LIVESTOCK LTD.

It is my pleasure to be working the Feige Family in their 13th Annual Bull Sale.

Double F Cattle Co. once again has put forth a top notch offering of purebred and commercially worthy bulls to town. When touring through the bull pens, you sure do notice the consistency in the offering with great hair coats, muscle expression and docility in these bulls. Backed by a tremendous cow herd that have very good udder and feet. Over the many years in developing this cow herd, Double F have always concentrated in the most important features in making this cow herd for longevity and fertility. The many hours visiting with Kelly and searching for the next herd bull to take the program to the next level and bringing new genetics that will continue to add to the cow herd. The bulls being offered are the coupons that you get to analyze and value at public auction.

In last year's event, the Red Angus bulls were very accepted and they will continue add more to the bull sale every year. Also, this year we have some Simmental bulls for you to evaluate. The event has everything you need for your next purebred or commercial bull.

If I can help you in any way, please do not hesitate to call me or call the Feige Family or any of the other sales staff and we will help you with your needs. See in you in Prince Albert on the 26th of March.

Mark Holowaychuk
OBI Livestock Ltd.
(403)896-4490



Double 'F' Cattle Co.

13th Annual Bull Sale

Saturday, March 26, 2022 :: Northern Livestock Sales
PRINCE ALBERT, SK :: 2:00 PM

Sale Location - South on Highway #2, turn east on the Elevator Road
(across from Flaman's)

BREEDING GUARANTEE

All bulls will be semen evaluated by a certified veterinarian.
We fully guarantee all bulls sold 100%.

DELIVERY

Free delivery up to 250 miles or receive \$100.00/bull
discount for taking your bull home sale day!

WINTERING

You can send your purchase(s) back to the farm and pick them up at your
convenience by April 15, 2022. Bulls will be kept for a cost of \$3.00/head/day.
Bulls returning to Double 'F' must be insured.

SIGHT UNSEEN PURCHASE PROGRAM

For those of you who cannot attend the sale, we offer a sight unseen purchase
program. Call any one of the sales staff and they will
recommend suitable bulls. Your order will be handled with strict confidence.

TO OUR CATTLEMEN FRIENDS

In order to do what we do we require the help of some very special people. The
advertising included in our catalogue are businesses
that provide us with great service and we hope you will support them.
Thank-You!

PICTURES AND VIDEOS

Pictures and videos taken at the beginning of February.
Taken by Tyler Harris Photography

VIDEOS

Videos will be available at www.doublefcattle.com

CATALOGUE CREATED BY

14 West Creations

On Offer

49 Yearling Bulls
and Sting
Black and Red Angus
Black SimmAngus

**AUCTION WILL BE CONDUCTED
LIVE WITH BIDDING ALSO
AVAILABLE ON DLMS**

SALE STAFF

Auctioneer...
Brent Carey (403) 549-2478
Ryan Hurlburt - Ringman (306) 292-9812
Randy Ames - Ringman (306) 858-7788

SALE DAY PHONES

Mark Holowaychuk, OBI (403) 896-4990
Kelly Feige (306) 747-7498
Brandon Sander, sale consultant (306) 747-9034

NORTHERN LIVESTOCK SALES BUYER REPRESENTATIVES

Glen Smith (306) 960-4732
Boyd Stuart (306) 841-7998
Brent Brooks (306) 240-5340

ACCOMMODATIONS

Best Western Premier (306) 703-0308
Super 8 Motel (306) 953-0088
Holiday Inn (306) 730-1000

INSURANCE

Will be available sale day. All bulls returning to Double 'F' must be
insured.

IF YOU NO LONGER WISH TO RECEIVE OUR CATALOGUE
please contact us at kafeige@sasktel.net or 306-747-2376

ONLINE BIDDING - www.DLMS.ca **DLMS**
Mark Shologan (780) 699-5082 www.dlms.ca





DWAJO REALLY WINDY 38G

REFERENCE *sires*



PEAK DOT ROUGHRIDER 12G



MERIT STING 7047E



PERROT SPARKPLUG 41G



MERIT GLOBAL 9021G



GF BARELY LEGAL 13E



RED COCKBURN PENDLETON 9095



Dean Horn 1974-2022

The Double 'F' family and the cattle industry lost a special person earlier this year. To most people he was known as DEAN but to his friends he was known as WILLY.

Willy was always ready to lend a hand to anyone and was happiest working with cattle. His smile, joking attitude and big heart will be remembered forever!

"So long my friend, until we meet again. I will remember you and all the times we used to sit right here.... and drink a beer."

lot
7047



This was a very hard decision to sell **STING**. A bull, like **STING**, gives you the feeling the bull might be a once in a lifetime thing or that you got lucky and won the lottery! It has been a great ride with **STING**!

We got to show case him at the most prestigious Stock Show in North America-NWSS in DENVER where **STING** was the main attraction and caused a lot of excitement in the Yards. The reaction was something I am still in awe of today and an exceptional experience I will never forget!!!

STING has received many accolades in his show career including championship banners at Lloyd Stockade Round up, OLDS Fall Classic, Edmonton Farmfair, Prince Albert Summer Show, Brandon Ag Ex, Regina Canadian Western Agribition, 2018 Junior Show Bull of the Year as well as top 10 placings at CWA Supreme.

It is easy to describe how kick ass good **STING** is but I believe the pictures do my talking for me!

I think the most important thing is the legacy **STING** has left here at DOUBLE 'E'!

STING has left us with some exceptional bulls that our customers are very proud to have in their pastures.

STING's daughters are in a class of their own. These beautiful uddered females are showing so much promise and are unmatched in power. I will always wish I had more of them.

STING and his offspring have and will continue to make their mark and presence felt in the cattle industry for years to come!

This could be a once in a lifetime opportunity to take your herd to the next level!!! **DON'T MISS OUT!!!**

lot
7047E

performance

BW 79
ADJ W 945
ADJ Y 1525

1974759

TJL 7047E

Merit **STING** 7047E
February 04, 2017

sure **BAR S RANGE BOSS 4002**

BAR S RANGE BOSS 1118
BAR S PRIDE 0073

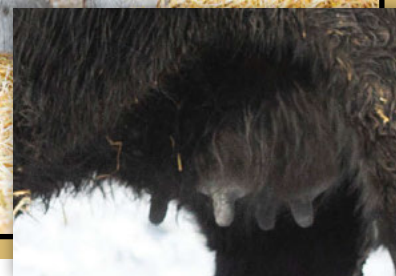
dam **MERIT SOCIALITE 5121C**

EXAR ONE-IRON 3889B
MERIT SOCIALITE 1223

CE	BW	WW	YW	MCE	MILK
3.0	4.0	69	118	7.0	20



Lot
101



TYPICAL STING UDDER

Lot
101J

performance

BW	85
Sep 8	850

2240058 TBCH 101J BCH **JOE** 101J
February 27, 2021

sire **MERIT STING 7047E**

BAR S RANGE BOSS 4002
MERIT SOCIALITE 5121C

dam **DFCC CECILLA 97C**

MUSGRAVE BOULDER
DFCC ST WOW 11X

- A standout since birth!
- Best **STING** bull in the pen!
- brings it all to the table- thickness, bone, width, barrel, rib and hair
- love this dam and would keep all females here.
- owned with Blind Creek Holdings - Dwein and Jeff Trask

CE	BW	WW	YW	MCE	MILK
4.0	2.9	59	105	6.5	28



Lot
10J

performance

BW	68
Sep 8	860

Applied For DFCC 6813 **JOKER** 10J
DFCC 10J January 21, 2021

sire **S A V SUPERCHARGER 6813**

S A V RECHARGE 3436
S A V MADAME PRIDE 0075

dam **MERIT FLORA 6078D**

BAR S RANGE BOSS 4002
MERIT FLORA 4120

PE CE	PE BW	PE WW	PE YW	PE MCE	PE MILK
3.5	2.9	60	99	5.5	20

- **ET**
- **HEIFER BULL**
- Really excited about our ET bulls this year, we really admire them for their stoutness, style and completeness. From every angle, they display the shape and dimension to be strong breeding bulls.

lot
71



DFCC 71X DREAM GIRL 108Z

lot
71J

performance

BW	88
Sep 8	900

CE	BW	WW	YW	MCE	MILK
0.0	3.8	59	104	5.0	24

2212860 DFCC 7047E **JOHN BOY 71J**
DFCC 71J February 12, 2021

sire **MERIT STING 7047E**

BAR S RANGE BOSS 4002
MERIT SOCIALITE 5121C

dam **DFCC 71X DREAM GIRL 108Z**

DURALTA 4T TURBO 71X
DFCC 32T HOT GIRL 37W

- This bull is a **ROCKSTAR** and is one of the bulls that makes you do a second take!
- extremely wide and thick but still has a sleek front end.
- both him and his dam were favorites at the **2021 SASK ANGUS TOUR** this summer!
- Dam has left a legacy here at **DOUBLE 'F'**

lot
11J

performance

BW	70
Sep 8	820

PE CE	PE BW	PE WW	PE YW	PE MCE	PE MILK
3.5	2.9	60	99	5.5	20

Applied For DFCC 6813 **JEOPARDY 11J**
DFCC 11J January 21, 2021

sire **S A V SUPERCHARGER 6813**

S A V RECHARGE 3436
S A V MADAME PRIDE 0075

dam **MERIT FLORA 6078D**

BAR S RANGE BOSS 4002
MERIT FLORA 4120

- **ET**
- **HEIFER BULL**
- Stout yet smoothly made
- Check out the performance!



lot
1



RED EXCEL BARB 909G

lot
1J

2243275 Red DFCC 2C **JACK 1J**
DFCC 1J January 02, 2021

performance

BW 65
Sep 8 800

sire **RED BRIDGEWAY DYNAMIC 2C**

RED BWFX DYNAMITE 10Z
RED D-BARTIBBIE 27S

dam **RED EXCEL BARB 909G**

RED WINDY HILL ZEPPELIN 1240Z
RED GLESBAR BARB 112Z

CE	BW	WW	YW	MCE	MILK
4.0	0.8	37	61	9.0	23

- **JACK** is one of those bulls getting better and better everyday.
- His moderate frame, long body, wide base, stoutness and smoothness are just some of the qualities that will catch your eye.
- **DAM** was the high seller **RED** Angus female in the Northern Select Sale from Excel Ranches.

lot
5



lot
5J

2241157 Red DFCC 95G **JAZ 5J**
DFCC 5J January 16, 2021

performance

BW 71
Sep 8 860

sire **RED COCKBURN PENDLETON 9095**

RED SVR CONTINENTAL 112E
RED COCKBURN CORA 326A

dam **RED U-2 STARFIRE 412A**

RED U2 MISSION 61W
RED U2 STARFIRE 133W

CE	BW	WW	YW	MCE	MILK
7.0	-0.8	41	64	5.0	20

- **HEIFER BULL**
- A dark red **PENDLETON** son that has extra length and smoothness.
- His performance will show up in your calf crop and add money to your wallet.

lot
212J

Red DFCC 157E **JOEY** 212J
Applied For DFCC 212J January 15, 2021

performance

BW 88
Sep 8 820

sire **RED NRA DODGE CITY 157E** RED BRYLOR DODGE 124B
RED DIAMOND T BLRS.AG MONIQUE
dam **RED EYE HILL LASS 1612** RED MLK CRK LANCER 0119
RED EL-DEE LASS 571R

PE CE	PE BW	PE WW	PE YW	PE MCE	PE MILK
0.5	2.4	42	74	4.5	21

- clean fronted and extra length but is still big and soggy... his calves will have those added pounds
- love this **EYE HILL** cow

lot
212



lot
226J

Red DFCC 157E **JAG** 226J
Applied For DFCC 226J January 16, 2021

performance

BW 86
Sep 8 800

sire **RED NRA DODGE CITY 157E** RED BRYLOR DODGE 124B
RED DIAMOND T BLRS.AG MONIQUE
dam **RED NRA MAGGIE 126E** RED JENSEN DEMO 6C
RED NU-HORIZON MAGGIE 201Z

PE CE	PE BW	PE WW	PE YW	PE MCE	PE MILK
-2.5	3.7	45	78	5.5	24

- has smoothness and length but still carries the thickness needed

lot
226



lot
242J

Red DFCC 157E **JESSIE** 242J
Applied For DFCC 242J January 07, 2021

performance

BW 88
Sep 8 780

sire **RED NRA DODGE CITY 157E** RED BRYLOR DODGE 124B
RED DIAMOND T BLRS.AG MONIQUE
dam **RED WARD'S BLACKBIRD 42E** RED J/L SIGNATURE 49B
RED WARD'S BLACKBIRD 2B

PE CE	PE BW	PE WW	PE YW	PE MCE	PE MILK
-1.0	2.5	37	60	4.5	19

- has eye appeal and extra length and width
- solid bull from front to back
- the females sired by 242J will be awesome.

lot
242



lot
12



UDDER OF DAM OF 12J

lot
12J

2207316 DFCC 9021G **JIGGER** 12J
DFCC 12J January 21, 2021

performance

BW 66
Sep 8 800

sire **MERIT GLOBAL 9021G**

2K WISCONSIN 207
MERIT BLACKBIRD 7016E

dam **DFCC 107D GEM 32G**

BAR-E-L STRONGBOW 107D
DFCC 34Z CARRIE LYNN 99C

• **HEIFER BULL**

- heifer's first calf and what a calf!
- low bw
- high performance to add pounds to your steers.
- dam's pedigree will leave you with some gorgeous females
- A Herd bull that checks all the boxes... you will want him in your pasture!

CE	BW	WW	YW	MCE	MILK
10.0	-0.1	54	101	10.0	24

lot
16



lot
16J

2207317 DFCC 9021G **JAXX** 16J
DFCC 16J January 22, 2021

performance

BW 64
Sep 8 760

sire **MERIT GLOBAL 9021G**

2K WISCONSIN 207
MERIT BLACKBIRD 7016E

dam **DFCC 7047E GOLDEN GIRL 112G**

MERIT STING 7047E
MJT ATLANTA 257X

CE	BW	WW	YW	MCE	MILK
10.0	0.0	49	93	11.0	25

• **HEIFER BULL**

- sleep easy kind of bull.
- you will notice is length and width right away.
- his calves will push down the scale!
- mother is a powerful **STING** daughter with a flawless udder



DFCC 7047E GOLDEN GIRL

**Double
Cattle Co.**

Sale Day Phone Kelly 306-747-7498

YOUR ONE STOP A

lot
240J

Applied For Red DFCC 157E **JULES** 240J
DFCC 240J January 30, 2021

performance

BW 98
Sep 8 740

RED NRA DODGE CITY 157E

RED BRYLOR DODGE 124B
RED DIAMOND T BLRS.AG MONIQUE

dam RED WARD'S VELVET 40E

RED JIL SIGNATURE 49B
RED HALCYON VELVET 662S

PE CE	PE BW	PE WW	PE YW	PE MCE	PE MILK
-4.0	3.9	44	78	4.0	17

- will be admired for his hair, style and completeness but still will produce those pay pounds

lot
240



lot
14J

2241156 Red DFCC 95G **JOE** 14J
DFCC 14J January 22, 2021

performance

BW 73
Sep 8 880

RED COCKBURN PENDLETON 9095

RED SVR CONTINENTAL 112E
RED COCKBURN CORA 326A

dam RED U-2 COUNTESS 532A

RED HOWE MAGNUM 169W
RED FLYING K COUNTESS 2N

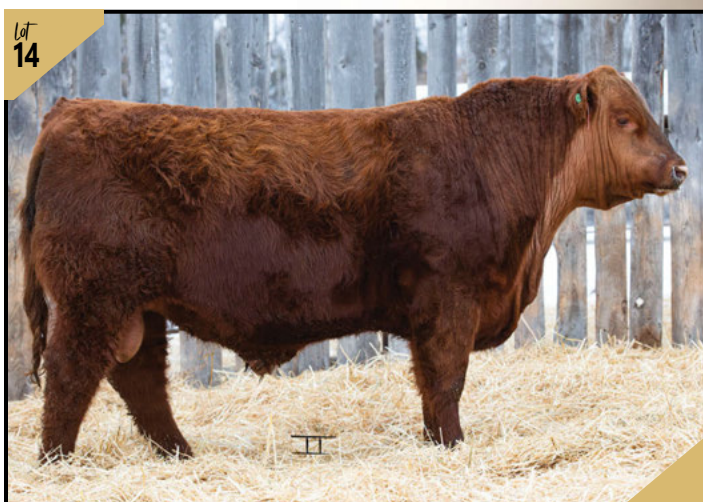
CE	BW	WW	YW	MCE	MILK
7.5	-0.5	39	77	10.0	26

- crowd favorite at the 2021 SASK ANGUS TOUR this summer
- Super long with a tremendous hip
- love this dam



RED U-2 COUNTESS 532A

lot
14



lot
35J

2215763 DFCC 12G **JUBILEE** 35J
DFCC 35J January 27, 2021

performance

BW 79
Sep 8 780

RED PEAK DOT ROUGHRIDER 12G

ELLINGSON ROUGHRIDER 4202
PEAK DOT BARDOLIA 19C

dam DFCC 7047E GLENNA 101G

MERIT STING 7047E
DFCC 488Z DANIKA 55D

CE	BW	WW	YW	MCE	MILK
1.0	3.0	51	81	8.0	24

- low bw bull out of the PEAK DOT ROUGHRIDER Bull
- loads of hair and shape
- his dam is dam good!

lot
35



Take Advantage of our
SIGHT UNSEEN PROGRAM

Call Kelly for more information 306-747-7498

lot
20



BARELY LEGAL UDDER

lot
20J

performance

BW 87
Sep 8 830

2216037 DFCC 20J DFCC 13E **JITTER** 20J
February 23, 2021

sure **GF BARELY LEGAL 13E**

LEACHMAN SAUGAHATCHEE 3000C
HCC BLACK MERCEDES 13N

dam **MJT ATLANTA 257X**

GEIS KODIAK 53'07
R & M 27J ATALANTA 84L

- This guy has big time power front to back.
- out of a old **MJT** cow that knocks if out of the parks every year!

CE	BW	WW	YW	MCE	MILK
-2.0	4.7	56	101	4.0	27



lot
38J

performance

BW 74
Sep 8 830

2207319 DFCC 38J DFCC 13E **JULIO** 38J
January 28, 2021

sure **GF BARELY LEGAL 13E**

LEACHMAN SAUGAHATCHEE 3000C
HCC BLACK MERCEDES 13N

dam **DFCC 323C FLIGHT 49F**

U-2 CASH ADVANCE 323C
DFCC 5Y DESTINY 64D

CE	BW	WW	YW	MCE	MILK
7.0	2.2	49	93	9.0	21

- **HEIFER BULL**
- a moderate framed long bodied bull that your heifers will love!

lot
30



MERITA FLORA 6078D

lot
30J

Applied For **DFCC 4565 JACKED 30J**
DFCC 30J January 26, 2021

performance

BW 85
Sep 8 860

sire **SCHIEFELBEIN ATTRACTIVE 4565** JMB TRACTION 292
FROSTY ANSWER 3979

dam **MERITA FLORA 6078D** BAR S RANGE BOSS 4002
MERITA FLORA 4120

PE CE	PE BW	PE WW	PE YW	PE MCE	PE MILK
4.5	3.0	73	120	8.5	27

- ET
- 30J was a feature at the **2021 SASK ANGUS TOUR** this summer and got a lot of attention!
- this bull just puts it all together... on paper, performance, features and structure with an excellent maternal pedigree behind him!
- A favorite here and catches peoples' eye with his muscle, deep flank, width, length and hair coat.
- hard to make them any better than this!

lot
44J

2207320 DFCC 41G **JIGSAW 44J**
DFCC 44J February 01, 2021

performance

BW 77
Sep 8 860

sire **PERROT SPARKPLUG 41G** LD CAPITALIST 316
PERROTS BLACKBIRD 16E

dam **DFCC 107D FINE 'N' DANDY 58F** BAR-E-L STRONGBOW 107D
POPLAR MEADOWS ANNIE K 5'12

CE	BW	WW	YW	MCE	MILK
8.0	0.5	59	85	7.0	22

- stout, low birth weight bull with plenty of hair and length.



lot
56



lot
56j

Red DFCC 95G **JACK DANIELS** 56J
2241152 DFCC 56J February 05, 2021

performance
BW 88
Sep 8 950

RED COCKBURN PENDLETON 9095 RED SVR CONTINENTAL 112E
RED COCKBURN CORA 326A

dam RED U-2 INATEXXI 130D RED U-2 RECON 192Y
RED U-2 INATEXXI 301Z

CE	BW	WW	YW	MCE	MILK
-1.0	3.3	59	98	5.0	28

- 56J's **HERD BULL** presence makes him a stand out!
- **JACK DANIELS** is one of those bulls that you will want to show all your neighbors.
- His extra thickness and width will add pay weight to your steers.
- A bull that should be on your list!

lot
59



lot
59j

2207324 DFCC 59J DFCC 13E **JUAN** 59J
February 06, 2021

performance
BW 79
Sep 8 820

GF BARELY LEGAL 13E LEACHMAN SAUGAHATCHEE 3000C
HCC BLACK MERCEDES 13N

dam MCKEVITT BENNITA 18E WINDY WILLOWS FOCAL POINT 6C
MCKEVITT BENNITA 6C

CE	BW	WW	YW	MCE	MILK
7.0	2.0	51	91	9.0	27

- really like this **BARELY LEGAL** son
- build like a **MACK** truck with stoutness, width and muscle
- dam a very hard working good McKEVITT Angus cow

lot
58



PATERNAL SISTER TO 58J

lot
58J

2207323 DFCC 13E **JAGGER 58J**
DFCC 58J February 06, 2021

performance

BW 84
Sep 8 930

sire **GF BARELY LEGAL 13E**

LEACHMAN SAUGAHATCHEE 3000C
HCC BLACK MERCEDES 13N

dam **DFCC 1Z CANDY 136C**

K-COW WINDMILL 1Z
DFCC 32T HOT GIRL 37W

CE	BW	WW	YW	MCE	MILK
2.0	3.2	54	93	6.0	29

- A **POWERHOUSE** bull here and once you lay your eyes on him you will realize how good he is!
- long bodied, attractive, square made and packed full of muscle.
- paternal sister high selling black heifer at the **2021 LADIES OF THE WEST SALE!**
- dam is our CANDY cow that might be my favorite cow here

lot
60J

2207326 DFCC 41G **JOURNEY 60J**
DFCC 60H February 08, 2021

performance

BW 76
Sep 8 835

sire **PERROT SPARKPLUG 41G**

LD CAPITALIST 316
PERROTS BLACKBIRD 16E

dam **DFCC 1Z EMMA 30E**

K-COW WINDMILL 1Z
DFCC 176W STELLA 79Y

CE	BW	WW	YW	MCE	MILK
5.0	0.6	49	65	7.0	22

- well made, with a low bw and extra length and shape.
- you will want to keep the heifers here.



lot
66



lot
66J

2207327 DFCC 7047E **JAXON** 66J
DFCC 66J February 11, 2021

performance

BW 85
Sep 8 800

sire **MERIT STING 7047E**

BAR S RANGE BOSS 4002
MERIT SOCIALITE 5121C

dam **DFCC 5Y BREATHE 56B**

NORSEMAN KODIAK 5'11
HAWKE NW MARION'S G.I.C. 122W

CE	BW	WW	YW	MCE	MILK
1.0	3.6	54	93	5.0	21

- big stout made with big time performance.

lot
67



lot
67J

2207328 DFCC 41G **JASPER** 67J
DFCC 67J February 10, 2021

performance

BW 78
Sep 8 760

sire **PERROT SPARKPLUG 41G**

LD CAPITALIST 316
PERROTS BLACKBIRD 16E

dam **DFCC 244B FATE 42F**

SIX MILE COMPLETE 244B
MJT ATLANTA 257X

CE	BW	WW	YW	MCE	MILK
6.0	1.0	44	71	7.0	24

- **HEIFER BULL**
- Cool made... might be the most complete heifer bull in the sale.
- Dam side has potential for some excellent heifers.

lot
68



lot
68J

2212859 Red DFCC 83G **JAMISON** 68J
DFCC 68J February 11, 2021

performance

BW 80
Sep 8 800

sire **RED JIL LEGEND 83G**

RED RINGSTEAD KARGO 215U
RED JIL MISS DEAL 89C

dam **RED WRAZ BARONESS 57G**

RED ACC BIG SHOT 118E
RED WRAZ BARONESS 49B

CE	BW	WW	YW	MCE	MILK
1.0	3.2	56	92	5.0	25

- A low bw bull off a first calver we purchased from **WRAZ** Angus.
- Lots of style and shape.
- This dam has a bright future here.

Lot 69J DFCC 7047E **JUNO** 69J
2207329 DFCC 69J February 11, 2021

performance
BW 83
Sep 8 730

Sire MERIT STING 7047E
Dam DFCC 3049A DARLING 115D

BAR S RANGE BOSS 4002
MERIT SOCIALITE 5121C
MERIT BIG DAWG 3049A
DFCC 71X CRYSTAL 137Z

CE	BW	WW	YW	MCE	MILK
2.0	3.9	50	99	9.0	16

- JUNO** is packed full of depth and power with a dam second to none!



Lot 74J DFCC 7047E **JUDD** 74J
2207331 DFCC 74J February 13, 2021

performance
BW 90
Sep 8 800

Sire MERIT STING 7047E
Dam DFCC 18C ELYSIA 81E

BAR S RANGE BOSS 4002
MERIT SOCIALITE 5121C
RRAR INTERNATIONAL 18C
DFCC 71X BREATHLESS 47B

CE	BW	WW	YW	MCE	MILK
-2.0	5.6	63	120	4.0	20

- looking to put stretch in your calves **JUDD** is your bull.
- has the length but doesn't give up the width.



Lot 76J DFCC 7047E **JAMMER** 76J
2207332 DFCC 76J February 13, 2021

performance
BW 86
Sep 8 750

Sire MERIT STING 7047E
Dam MJT ERICA 528T

BAR S RANGE BOSS 4002
MERIT SOCIALITE 5121C
20/20 SHOW OFF 29R
MJT ERICA 1J

CE	BW	WW	YW	MCE	MILK
2.0	4.3	48	97	6.0	23

- soggy made **STING** son loaded with muscle and power.
- another one of these **MJT** cows that just keeps on going and going!



lot
77



lot
77J

performance

BW 68
Sep 8 770

2207441

DFCC 77J

DFCC 12G **JUNIOR** 77J

February 14, 2021

sire **PEAK DOT ROUGHRIDER 12G**

ELLINGSON ROUGHRIDER 4202
PEAK DOT BARDOLIA 19C

dam **DFCC 1Z ELIZA 64E**

K-COW WINDMILL 1Z
MUT ERICA 528T

CE	BW	WW	YW	MCE	MILK
6.0	0.8	39	77	11.0	24

• **HEIFER BULL**

- check **JUNIOR** out... he has lots to offer!
- made just right to be a sleep easy kind

lot
82



lot
82J

performance

BW 74
Sep 8 780

2207333

DFCC 82J

DFCC 7047E **JIMMY** 82J

February 17, 2021

sire **MERIT STING 7047E**

BAR S RANGE BOSS 4002
MERIT SOCIALITE 5121C

dam **DFCC 51C FOREVER 51F**

DFCC 36Z CAPITAL 15C
CFS LADY 87P

CE	BW	WW	YW	MCE	MILK
5.0	1.7	52	79	7.0	21

- low bw **STING** bull that is complete from front to back.
- what makes this bull extra special is his dam

lot
86



lot
86J

performance

BW 81
Sep 8 740

2207335

DFCC 86J

DFCC 7047E **JULES** 86J

February 19, 2021

sire **MERIT STING 7047E**

BAR S RANGE BOSS 4002
MERIT SOCIALITE 5121C

dam **DFCC 15C FOREVER LADY 110F**

DFCC 36Z CAPITAL 15C
TRIPLE L PRIDE 7T

CE	BW	WW	YW	MCE	MILK
3.0	2.8	57	96	8.0	19

- rugged made - would be an asset to any program
- very strong maternal side

Lot 97J

DFCC 12G JABBER 97J
2207338 DFCC 97J February 24, 2021

performance

BW	81
Sep 8	770

Sire PEAK DOT ROUGHRIDER 12G ELLINGSON ROUGHRIDER 4202
PEAK DOT BARDOLIA 19C

dam DFCC 5Y DANKA 17D NORSEMAN KODIAK 5'11
DFCC 32T SPARKLES 34Z

CE	BW	WW	YW	MCE	MILK
2.0	1.3	47	85	7.0	24

- these **ROUGHRIDER** sons are all stamped the same and easy to pick out in the pen.



Lot 99J

DFCC 38G JAYDEN 99J
2219062 DFCC 99J February 25, 2021

performance

BW	76
Sep 8	710

Sire DWAJO REALLY WINDY 38G DWAJO REALLY WINDY 60C
DWAJO JESTRESS 119Z

dam DFCC 1Z ELLY 78E K-COW WINDMILL 1Z
DFCC 32T FOREVER 9W

CE	BW	WW	YW	MCE	MILK
4.0	1.7	37	66	8.0	18

- HEIFER BULL**
- our **DWAJO** bull is consistently adding stretch to his calves.
- very nice fronted



Lot 105J

DFCC 13E JETT 105J
2207717 DFCC 105J March 01, 2021

performance

BW	86
Sep 8	750

Sire GF BARELY LEGAL 13E LEACHMAN SAUGAHATCHEE 3000C
HCC BLACK MERCEDES 13N

dam LODGE PRIDE 39Y GDAR GAME DAY 449
LODGE PRIDE 19W

CE	BW	WW	YW	MCE	MILK
3.0	2.4	40	66	4.0	24

- All the **BARELY LEGAL** sons have style and length.
- good old cow produces a good one ever year



lot
108



lot
108J

DFCC 12G **JOSH** 108J
2207718 DFCC 108J March 01, 2021

performance

BW 76
Sep 8 780

sure **PEAK DOT ROUGHRIDER 12G**

ELLINGSON ROUGHRIDER 4202
PEAK DOT BARDOLIA 19C

dam **DFCC 2C EMI 7E**

TOWN N COUNTRY PISTOL 2C
DFCC 488Z CHICKY 72C

CE	BW	WW	YW	MCE	MILK
6.0	1.2	51	90	10.0	25

- Built like a **BRICK SHIT HOUSE!**

lot
110



lot
110J

DFCC 41G **JIMMY** 110J
2207722 DFCC 110J March 03, 2021

performance

BW 84
Sep 8 740

sure **PERROT SPARKPLUG 41G**

LD CAPITALIST 316
PERROTS BLACKBIRD 16E

dam **DFCC 176W SASHA 91Z**

HF HEMI 176W
CALLAMERE BLACKCAP 32K

CE	BW	WW	YW	MCE	MILK
2.0	1.3	47	64	5.0	19

- **JIMMY** catches your eye in the pen with his stoutness and length
- younger bull but doesn't give up anything to the older ones.

lot
119



lot
116J

DFCC 12G **JONJA** 116J
2207782 DFCC 116J March 07, 2021

performance

BW 74
Sep 8 800

sure **PEAK DOT ROUGHRIDER 12G**

ELLINGSON ROUGHRIDER 4202
PEAK DOT BARDOLIA 19C

dam **DFCC 30C EVERYTHING 2E**

DFCC 1Z CAPITAL ONE 30C
DFCC 34Z CORINA 4C

CE	BW	WW	YW	MCE	MILK
4.0	1.0	61	103	9.0	28

- **HEIFER BULL**
- low bw with performance
- clean front with style and thickness
- could be the sleeper of the sale

lot
119



STING UDDER

lot 119J		DFCC 12G JUPITER 119J		March 10, 2021	
performance		2207726	DFCC 119J		
BW		sire PEAK DOT ROUGHRIDER 12G		ELLINGSON ROUGHRIDER 4202	
Sep 8		dam DFCC 7047E GRACIE 91G		PEAK DOT BARDOLIA 19C	
CE		MCE		MILK	
5.0		9.0		25	
BW		WW		YW	
1.1		59		97	

- **HEIFER BULL**
- A March bull that everything going for him with a excellent STING mother to complete the package... check him out sale day!

lot 124J		DFCC 38G JANGER 124J		March 12, 2021	
performance		2219063	DFCC 124J		
BW		sire DWAJO REALLY WINDY 38G		DWAJO REALLY WINDY 60C	
Sep 8		dam DFCC 5Y BACARDI 20B		DWAJO JESTRESS 119Z	
CE		MCE		MILK	
3.0		6.0		17	
BW		WW		YW	
1.4		48		79	

- **HEIFER BULL**
- Younger bull still puts it all together.
- Really like this bull.... 124J has a great future!



lot
120



lot
120J

2207727 DFCC 7047E **JAVIER** 120J
DFCC 120J March 11, 2021

performance

BW 86
Sep 8 830

sire **MERIT STING 7047E**

BAR S RANGE BOSS 4002
MERIT SOCIALITE 5121C

dam **DFCC 488Z CHICKY 72C**

MJT TOUCH DOWN 488Z
DFCC 71X ALICE 20A

CE	BW	WW	YW	MCE	MILK
3.0	3.4	68	119	8.0	24

- If you are looking for a powerful bull with a big top and more muscle and depth....here he is!!!
- **JAVIER's** calves will definitely push down the scales come fall.

lot
129



lot
129J

2212863 DFCC 41G **JOHNNY** 129J
DFCC 129J March 14, 2021

performance

BW 81
Sep 8 730

sire **PERROT SPARKPLUG 41G**

LD CAPITALIST 316
PERROTS BLACKBIRD 16E

dam **DFCC 15C FINAL FANTASY 73F**

DFCC 36Z CAPITAL 15C
DFCC 176W BREANNE 85B

CE	BW	WW	YW	MCE	MILK
4.0	2.0	62	92	6.0	23

- The more you look at **JOHNNY...** the more you find something else you like about him!

Lot
138



Lot
138J

Red DFCC 95G **JUNGLE MAN** 138J
2241155 DFCC 138J March 24, 2021

performance

BW 72
Sep 8 820

sire **RED COCKBURN PENDLETON 9095** RED SVR CONTINENTAL 112E
RED COCKBURN CORA 326A
dam **RED U2 GOLD EDGE 163E** RED TR ROLLS ROYCE 44B
RED U-2 GOLD EDGE 283B

CE	BW	WW	YW	MCE	MILK
7.0	-0.2	67	112	7.0	23

• **HEIFER BULL**

- dark red and solid from the ground up.
- will put pounds on your steers and leave with excellent females as well.
- 138J is one of those bulls you will climb over the fence to check out!

Lot
131J

DFCC 9021G **JOHN** 131J
2207740 DFCC 131J March 17, 2021

performance

BW 79
Sep 8 700

sire **MERIT GLOBAL 9021G** 2K WISCONSIN 207
MERIT BLACKBIRD 7016E
dam **DFCC 13E GINETTE 29G** GF BARELY LEGAL 13E
DFCC 33T TAMMY 64Y

CE	BW	WW	YW	MCE	MILK
6.0	2.0	57	109	8.0	25

- A young MARCH bull that could give the older ones a run for their money...he is just flat good!
- also check out the performance here



SimmAngus bulls...

A few years ago, the boys came up with the idea to bred some of our older purebred Angus cows to 'REGAN' our purebred Simmental bull. We have been using 'REGAN' on our commercials for a number of years and love the consistency of his calves. Garret and Jake figured since we knew how both the dam and sire performed in the past you would get the predicted results. We have been selling these **SIMMXANGUS** bulls off the farm and they have been very successful at their new homes. Take a good look at these **SIMMXANGUS** bulls as they could to be an asset to your commercial herd!



Lot 4J	
performance	
BW	92
Sep 8	980

SimmAngus 1/2 DFCC 4J January 16, 2021

sire **XS ATOMIC BOMB 41E**

XS ATOMIC LOAD 3A
SGCC BLK RAZAMATAZ 10T

dam **PUREBRED BLACK ANGUS**

- **WOW** is the only way to describe this bull... he will stop you in your tracks!!!!
- The **MONEY STRIPE**
- heaviest WW 980 lbs Sept. 3
- extra long bodied with a great top
- will sire pay weight steers and even better replacement females
- dam is a really strong uddered 15 yr cow

lot
40



lot
40J

performance

BW 91
Sep 8 860

SimmAngus 1/2

DFCC 40J

DFCC 40J
January 30, 2021

sire XS ATOMIC BOMB 41E

XS ATOMIC LOAD 3A
SGCC BLK RAZAMATAZ 10T

dam PUREBRED BLACK ANGUS

- bw 91 Sept WW 860 lbs- like the performance here
- rugged bull that will be an asset to any herd
- hard working HEMI daughter mother

lot
62J

performance

BW 76
Sep 8 760

SimmAngus 1/2

DFCC 62J

DFCC 62J
February 08, 2021

sire XS ATOMIC BOMB 41E

XS ATOMIC LOAD 3A
SGCC BLK RAZAMATAZ 10T

dam PUREBRED BLACK ANGUS

- a TANK!
- mass, rugged, stout and deep...power packed!!

lot
62



lot
78



lot
78J

SimmAngus 1/2 DFCC 78J February 14, 2021

performance

BW 92
Sep 8 880

sire XS ATOMIC BOMB 41E

XS ATOMIC LOAD 3A
SGCC BLK RAZAMATAZ 10T

dam PUREBRED BLACK ANGUS

- Eye appealing **BLAZE** face bull that shows off his big stoutness, big rib and big power!

lot
100



lot
100J

SimmAngus 1/2 DFCC 100J February 25, 2021

performance

BW 92
Sep 8 770

sire XS ATOMIC BOMB 41E

XS ATOMIC LOAD 3A
SGCC BLK RAZAMATAZ 10T

dam PUREBRED BLACK ANGUS

- This Cool **BLAZE** will grab your attention.
- made right ...built for pounds!

lot
137



lot
137J

SimmAngus 1/2 DFCC 137J March 23, 2021

performance

BW 93
Sep 8 670

sire XS ATOMIC BOMB 41E

XS ATOMIC LOAD 3A
SGCC BLK RAZAMATAZ 10T

dam PUREBRED BLACK ANGUS

- Younger bull but gives up nothing to the rest.
- thick, full of muscle, big barrel and strong top but still has style and character

Thank you

TO ALL OF OUR SPONSORS

J & R Meats

James & Rose Grypiuk
Box 1116, Shellbrook, SK

Phone: 306-747-2919

"For all your retail & custom needs"

13 km west & 3 km north of Shellbrook, SK

 **miEnergy**



Agricultural, Commercial and Utility Scale Solar

Discover how putting the sun to work on your farm can save you money and offer energy independence.

mienergy.ca sales@mienergy.ca 306-683-2247

RASK
Tax Service Ltd.

R.R. 1 Birch Hills, SK S0J 0G0 Ph: 749-2275

Dennis Rask
749-2759

Darrin Rask
749-3180
Fax: 749-2235

NORHEIM *NOR* RANCHING

Your Livestock Equipment Specialists



306.955.1350

NORHEIMRANCHING.COM

Your money
just got smarter.

Affinity
Credit Union

Tricia Bell B.Comm
AGRICULTURE ACCOUNT MANAGER

p: 306.747.6302 f: 306.747.3161
tricia.bell@affinitycu.ca

31 Main St., Box 204, Shellbrook, Sask S0J 2E0
TeleService 306.934.4000 866.863.6237

affinitycu.ca

Redhead EQUIPMENT
redheadequipment.ca

CASE IH
AGRICULTURE



PRINCE ALBERT Hwy 11 S | 306.763.6454

Stochmanski Livestock Hauling



Box 1012, Shellbrook, SK S0J 2E0
(306) 764-7654



DON CLARK/TANYA NIELSEN
306-883-2419/883-2506
rlfeeds1@sasktel.net

200 RAILWAY AVE W
BOX 907 SPIRITWOOD, SK
S0J 2M0

WE SELL QUALITY NAPA AUTO PARTS!

Terms and conditions

TERMS: The terms of the sale are cash or cheque, payable at par at the sale location. The right of property shall not pass until after settlement has been made; no invoicing on buyers in attendance unless previous arrangements have been made. Every animal sells to the highest bidder and in cases of dispute the auctioneer's decision will be final. Announcements from the auction block will take precedence over the printed matter in the catalogue. Current exchange rates will be announced sale day. All monies are in Canadian funds.

CERTIFICATE OF REGISTRATION: Each animal will carry papers issued by the Canadian Angus Association. A certificate of registry duly transferred will be furnished to the buyer for each animal after payment has been made.

HEALTH: All animals in the sale have met all necessary health requirements.

GUARANTEE: Each animal becomes the purchaser's risk immediately after the animal is sold. All animals in this sale will be sold under the terms and guarantees set forth by the Canadian Angus Association with regard to health, freedom from defects and from both reproductive and specific genetic unsoundness.

LIABILITIES: All persons attend the sale at their own risk. The sellers, facility owner, auctioneer and sale manager assume no liability, legal or otherwise, for any accidents that occur.

DELIVERY: Every assistance will be given in getting your purchases home. Free delivery up to 250 miles. Each animal becomes the risk of the purchaser as soon as sold.

PHONE, WIRE, MAIL BIDS: Bidders unable to attend the sale may phone, wire or mail their bids and instructions to the sale manager, auctioneer or special representatives. Bids must be received in sufficient time prior to the sale.

INSURANCE: Agents will be in attendance to insure your purchases. Bulls returning to the consignor's farm must be insured.

THE RIGHT TO COLLECT SEMEN: Double 'F' Cattle Co. reserves the right to Collect semen on any of the bulls sold at their expense and the buyer's convenience.

ERRORS: All announcements at sale time, written or oral, supersede any written material in the catalogue.



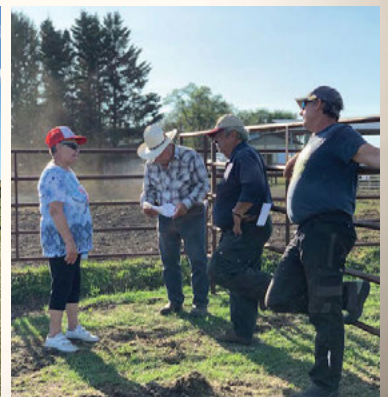
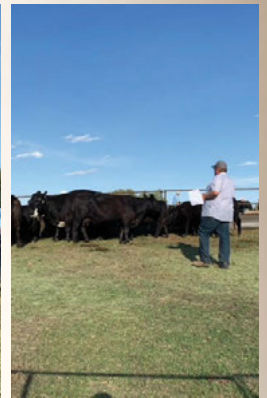
Gibson

"You have been a good dog,
My best friend right
through it all!"
Thank You!

Good-Bye

SASKATCHEWAN *Angus Tour*

AT DOUBLE 'F' - SUMMER 2021





Kinistino
306-864-3667

Humboldt
306-682-9920

Prince Albert
306-922-2525



FARMWORLD.CA

Twine & Net Wrap **PALLET PRICING!**

40,000 Twine - \$59.00/Roll*

Pricing based on the purchase of 40⁺ units; \$65.00 (1-9); \$62.00 (10⁺)

28,000 Twine - \$46.00/Roll*

Pricing based on the purchase of 50⁺ units; \$44.00 (1-9); \$42.00 (10⁺)

NET WRAP - \$235.00/Roll*

Pricing based on the purchase of 16⁺ units; \$265.00 each (1-15), 64" x 7000'

BALE WRAP - \$145.00/Roll*

Pricing based on the purchase of 40⁺ units; \$165.00 (1-9); \$155.00 (10⁺), 30" x 5000'

WHILE SUPPLY LASTS

3600W Inverter/Generator



- 212CC Powerease
- Electric Start
- 3000 running watt output • 2x USB ports
- LED control panel • Ultra quiet • Auto throttle saves fuel • 9L/2.2 gal fuel tank capacity

17% OFF!

NOW \$1199.00

20 GAL Compressor



- 2 HP, 120V
- 20 GAL Vertical Tank
- 5.3 CFM @ 40 PSI
- 4.0 CFM @ 90 PSI
- Wheeled
- 2 year Electric Motor Warranty
- 2 year Pump Warranty

26% OFF!

NOW \$285.00



Happy Customers...

Young and Old!

Thank you

TO EVERYONE FOR YOUR INTEREST IN THE 13TH ANNUAL DOUBLE F BULL SALE

Take Advantage of our **SIGHT UNSEEN PROGRAM** Call Kelly for more information 306-747-7498



LAKE COUNTRY



**10% Discount On Your
PickSeed forage
purchases!**

For more information,
contact your Lake Country
Co-op Agro Advisor.



PICKSEED®
good things growing...

This offer ends 04/15/2022

AFFORDABLE



LIVESTOCK EQUIPMENT

www.affordablelivestockequipment.com

1-844-500-5341 - Delivery and Leasing Available



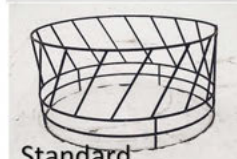
Continuous fencing panels to be mounted on posts



Freestanding panels for cattle, bison, horses, sheep & goats



Tombstone



Standard



Skirted



Haysavers



Shelters



Swinging Gates



Fenceline Bunk Feeders



Double Sided Bunk feeders



Grain Troughs



Windbreaks

**Return Undeliverable
Canadian Addresses to:**

Double F Cattle Co.
Box 50
Parkside, SK S0J 2A0



SEE YOU AT THE SALE March 26